

Port Jefferson Community Update

September 11, 2023

On **September 14, 2023 at 6:00 pm** there will be a public hearing before the Port Jefferson Village Planning Board on proposed improvements to the existing National Grid pier and upland area to accommodate Ørsted's Service Operation Vessel (SOV), a state-of-the-art boat that will house wind turbine mechanics who will maintain the company's portfolio of offshore wind turbines in the Northeast.



The Service Operation Vessel is approximately 260 feet long, similar in size to the large ferry in Port Jefferson.

-Image courtesy of Ørsted

Here's an overview of the proposed minor improvements that will be the subject of the hearing:

1. *Placement of four pre-fabricated 8'x20' office trailers just west of the pier access inside the enclosed National Grid facility.*
 - The trailers will be located behind existing vegetation, and Ørsted is proposing to place additional vegetative screening seaward of the structures to ensure view of the structures is blocked from the harbor view.
2. *Painting of existing bollards on the pier.*
 - Bollards will be painted to prevent corrosion and to indicate their suitability for use during Service Operation Vessel docking.



In this rendering, the red lines indicate where the trailers will be located on land, behind vegetative screening.

-Rendering by VHB

An overview of the operational plans for this location is as follows:

- The Service Operation Vessel will come to Port Jefferson a maximum of once per month, beginning in early 2025.
- The purpose of port calls at this location will be to change crew and to receive or exchange spare parts for the turbines, which will be stored long term at a nearby warehouse facility in East Setauket and held briefly in the shoreside trailers, if needed.
- One of the trailers will house bathroom and temporary shelter/office facilities.
- Crew will park offsite at the operations and maintenance headquarters located at 22 Research Way in East Setauket and will arrive to and depart from the pier site by minibuses.
- Access to the site by minibuses and for transportation of parts or supplies will be made via the 25A parcel access to avoid use of Beach Street.
- Port calls will be approximately 6-12 hours in duration on average and will typically take place during daylight hours.
- When the SOV is docked, the engines will be turned off to minimize sound disturbance and reduce emissions.

Project Background:

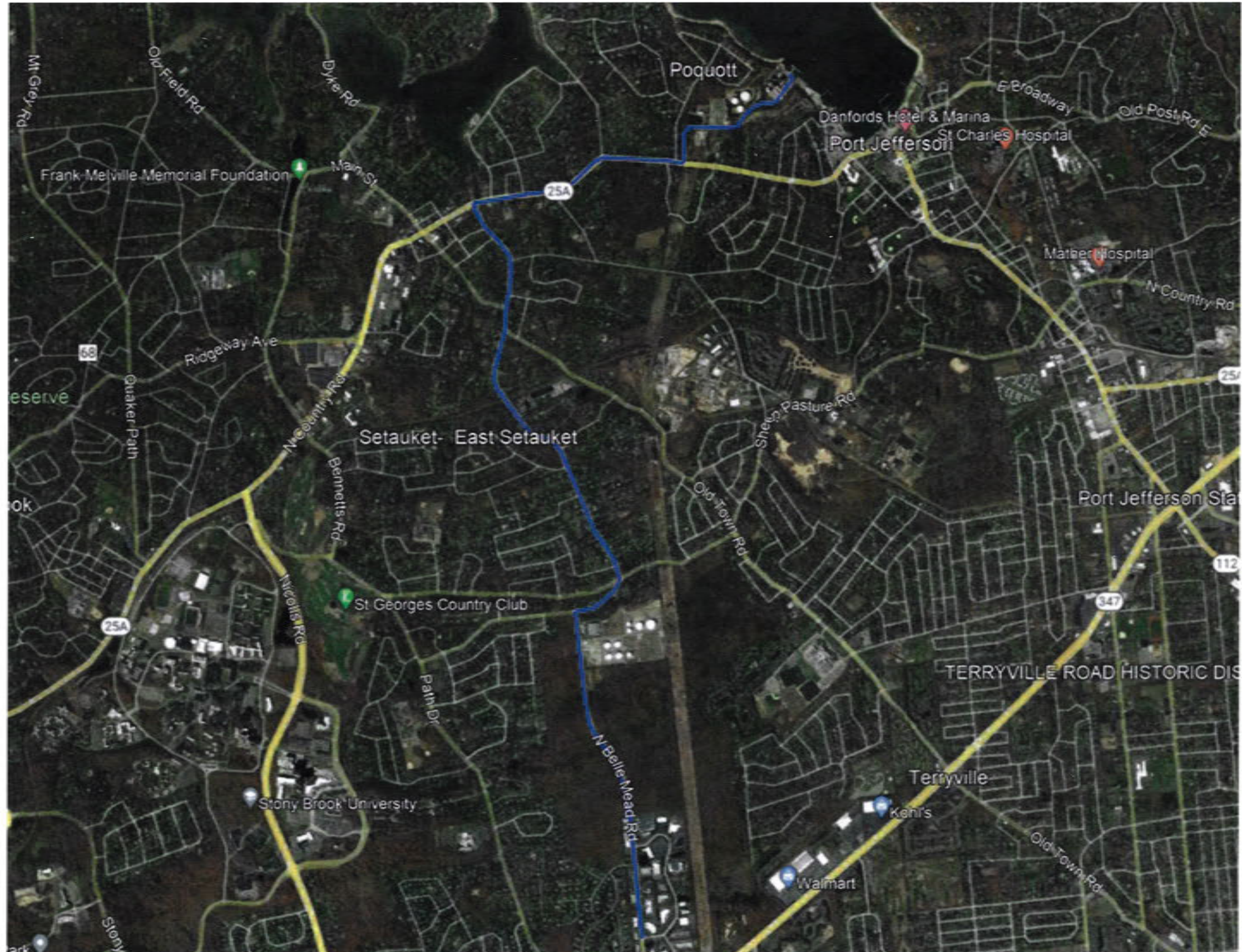
As part of the Sunrise Wind project, awarded in 2019, Ørsted and Eversource proposed to make Port Jefferson the home port of the SOV that will service the portfolio of its offshore wind projects in the northeast. The project is on track to receive its federal permits in early 2024, and to begin delivering power 2025. Once complete, Sunrise Wind will generate enough clean energy to power approximately 600,000 homes each year.

To learn more, visit sunrisewindny.com or send questions to info@sunrisewind.com

Port Jefferson Site Plan



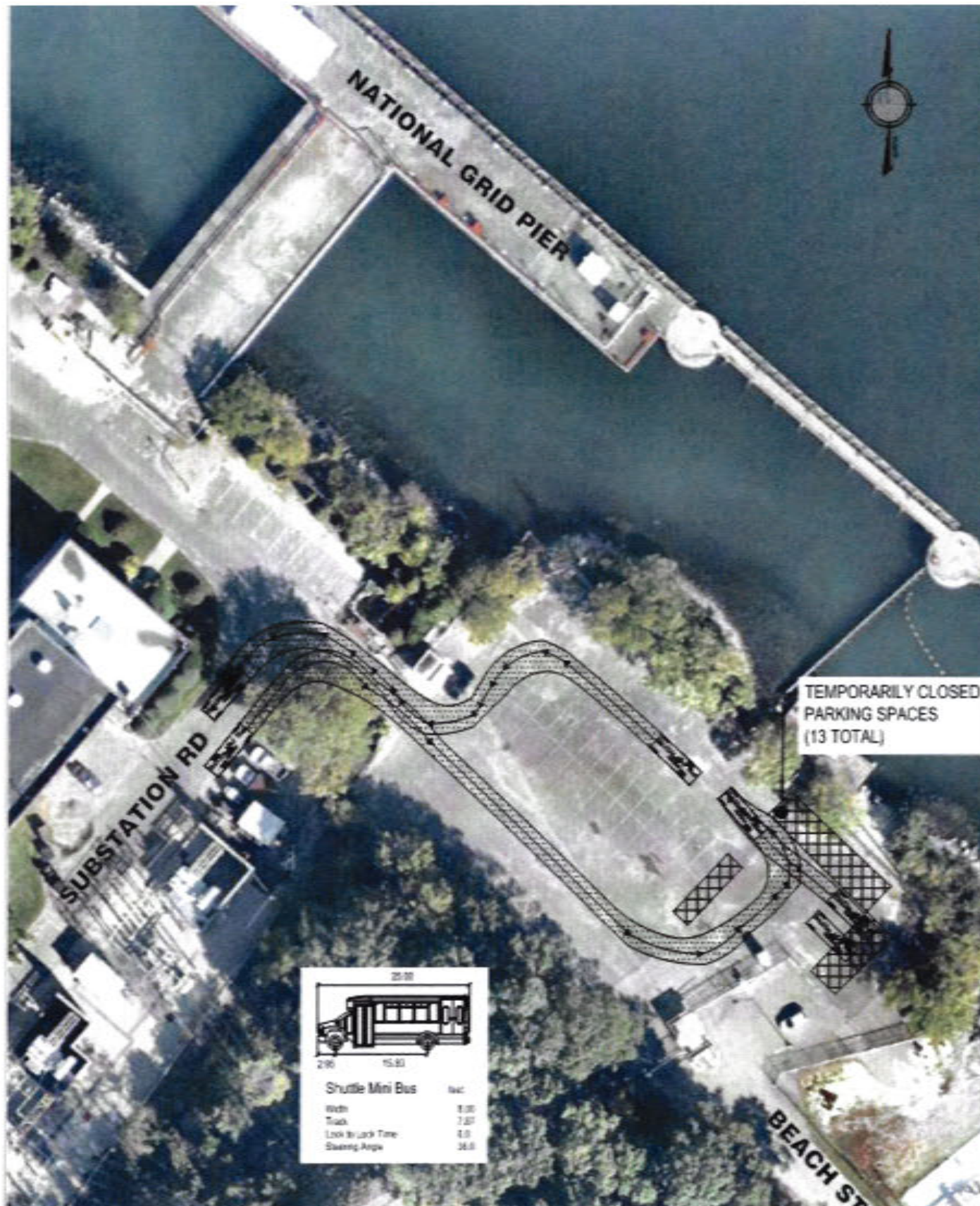
Bus Route - Overall from bus depot



Bus Route - Overall From Entrance



Bus Route - Parking Area



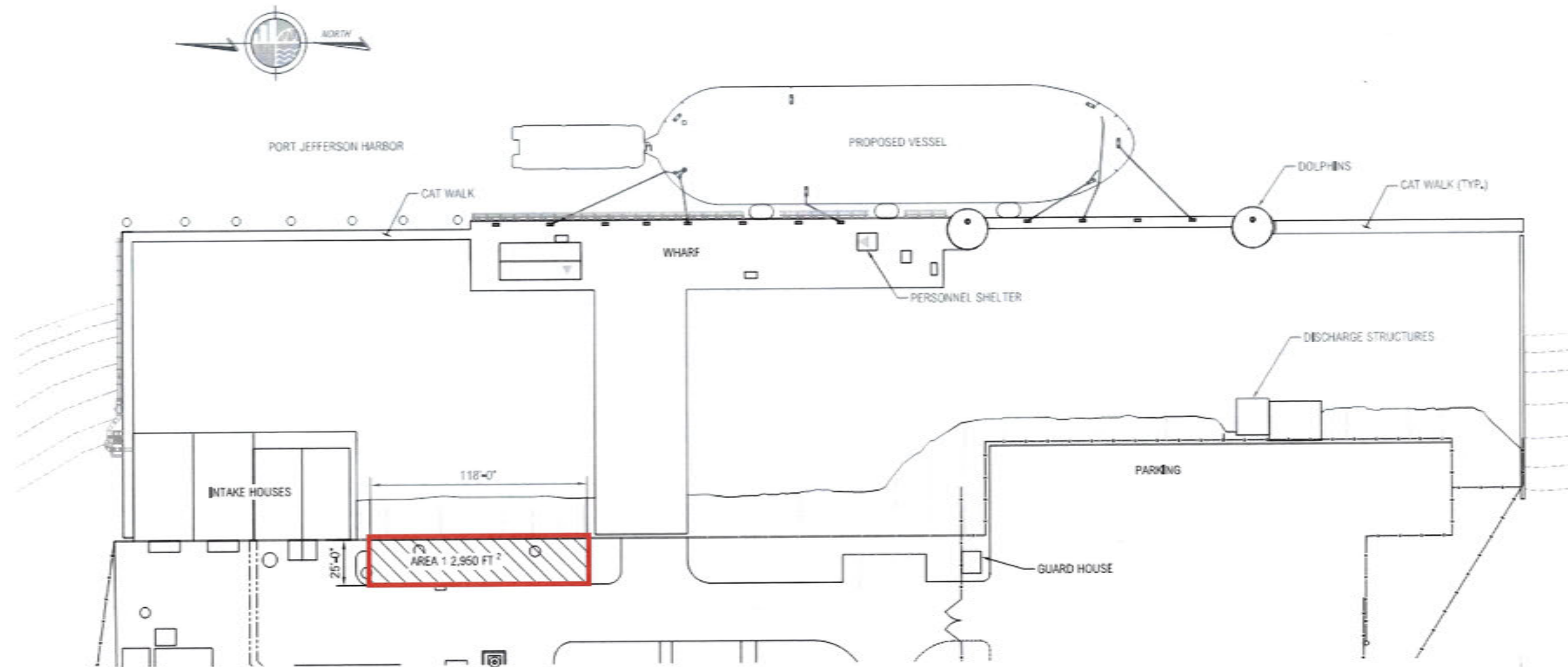
Lease Area Location



Site Photos of Lease Area



Wharf Area – Plan View

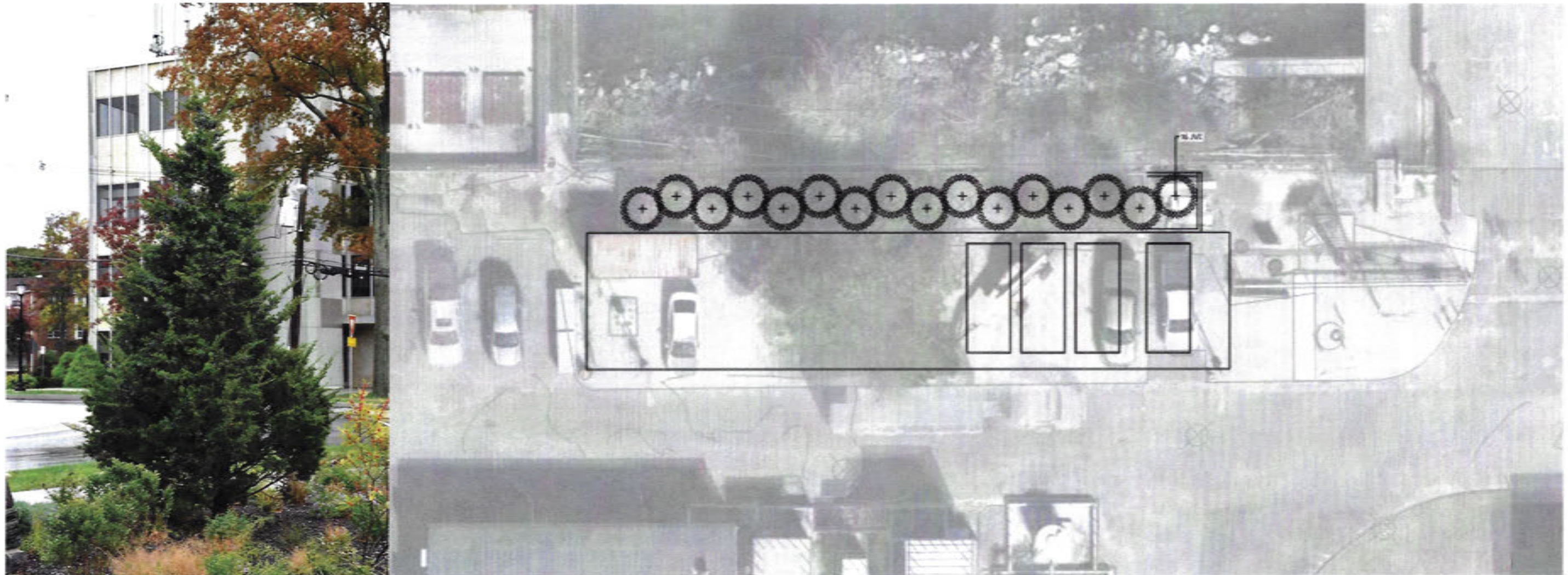


Lease Area 1

- Approximately 2,950 sq. ft.
- (4) 20-foot trailers

Landscape Plan

JVE *Juniperus virginiana* 'Emerald Sentinel'



 **Planting Plan**
SCALE: 1" = 10'

Proposed Vessel

Service Operations Vessel (SOV)

- 262' in length, 64' beam

Ferry Fleet Comparison

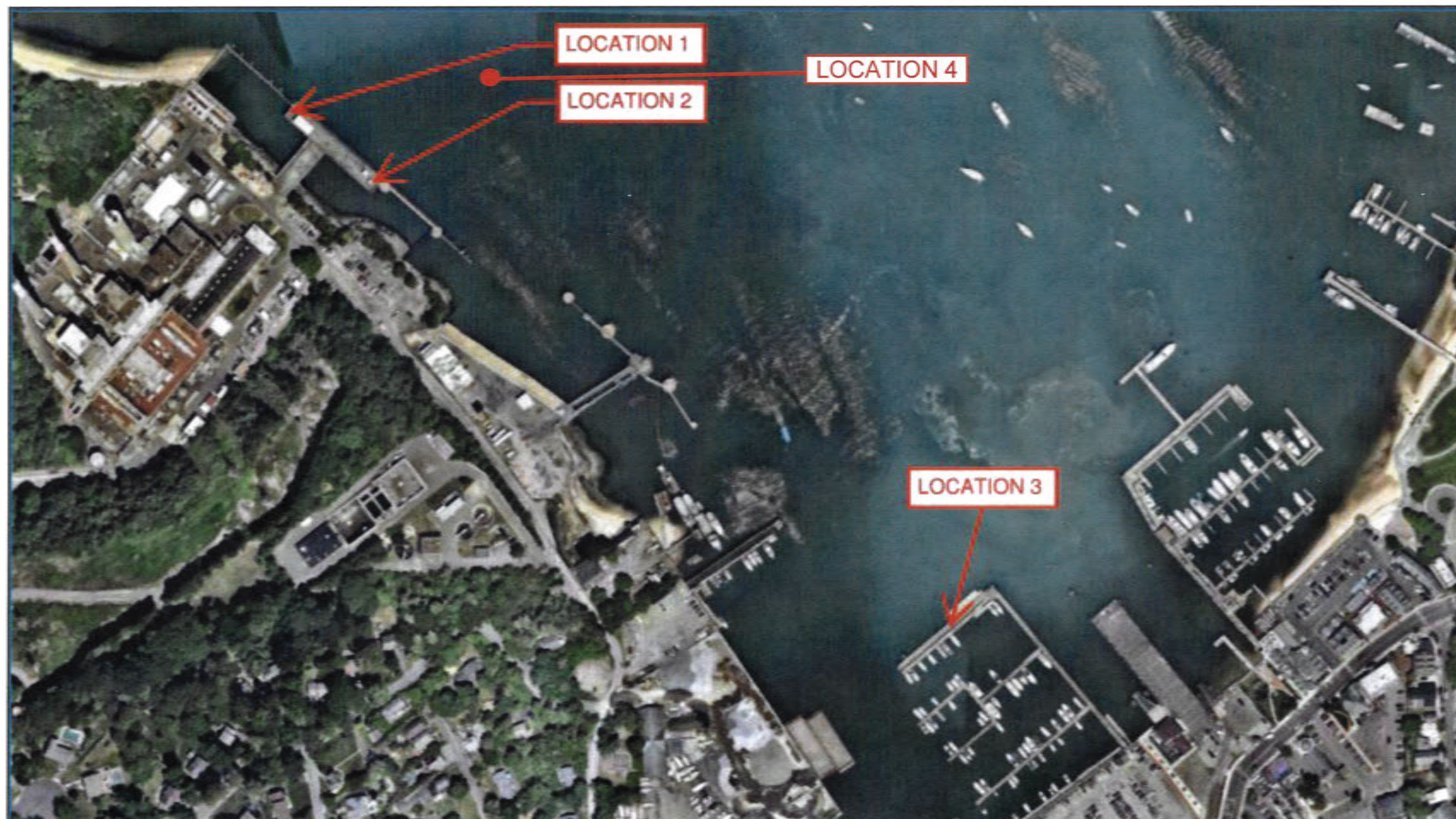
- Park City
 - 280' in length and 47' beam
- PT Barnum
 - 300' in length, 52' beam
- Grand Republic
 - 300' in length, 52' beam

National Grid Barge

- 414' in length with Tug, 52' beam



Photo Location map



Existing View



Location 1

Proposed View - Photo simulation



Location 1

Proposed View – Containers in Red



Location 1

Existing Views



Location 2



Location 3

Existing Views



Location 4



Picture 2 – Looking East from round base Pillar 1